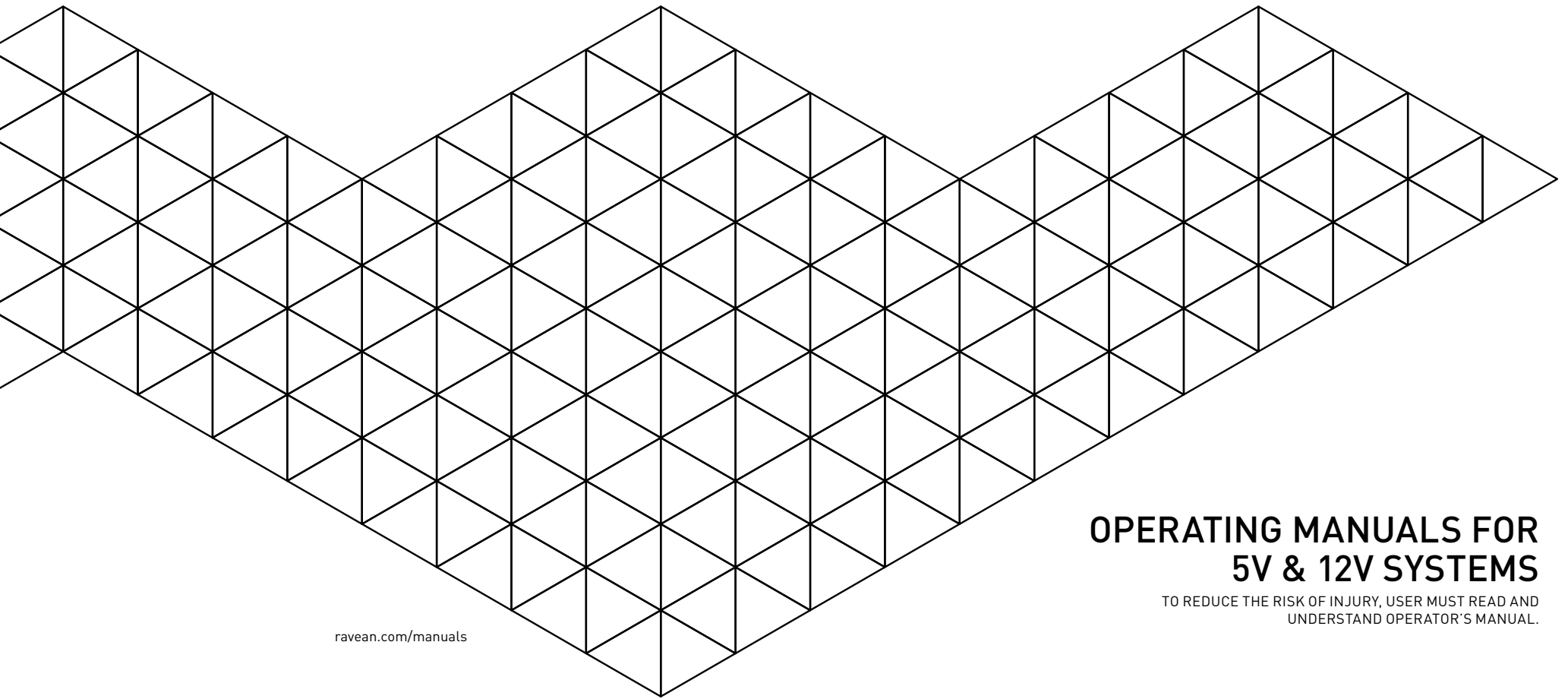


**RAVEAN™**



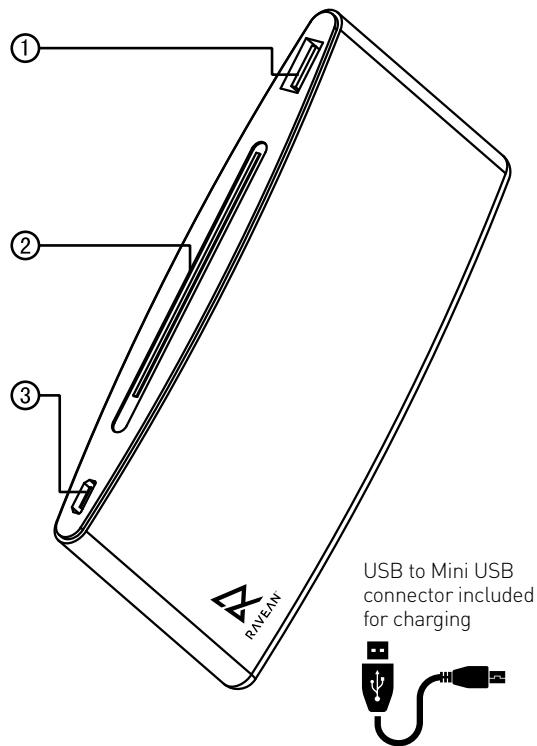
[ravean.com/manuals](http://ravean.com/manuals)

**OPERATING MANUALS FOR  
5V & 12V SYSTEMS**

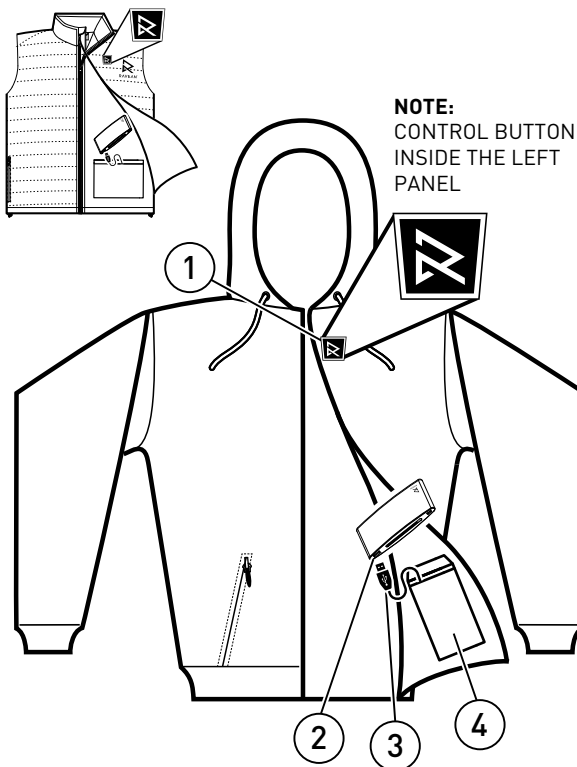
TO REDUCE THE RISK OF INJURY, USER MUST READ AND  
UNDERSTAND OPERATOR'S MANUAL.



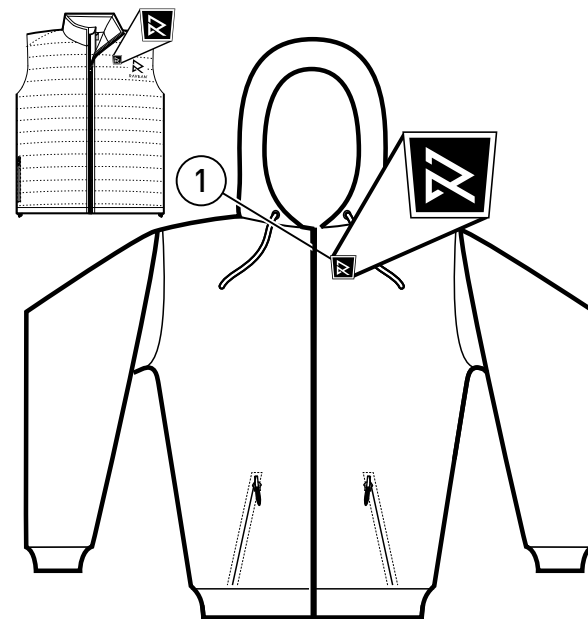
# RAVEANHEAT™ C6 SYSTEM : 5V QUICK SETUP GUIDE



- ① 2A OUTPUT USB SOCKET
- ② POWER STRIP LEVEL INDICATOR
- ③ MINI USB CONNECTOR FOR CHARGING POWER BANK



- 1. CONTROL BUTTON
- 2. USB POWER CABLE PORT
- 3. USB POWER CABLE
- 4. BATTERY POCKET



- 1. CONTROL BUTTONS (JACKET AND GLOVES)**
- TURN ON:** press and hold for 1-2 seconds to turn on. The button will light up and pulse red as it preheats (about 5 minutes), and then automatically adjust to medium heat (white led light)
- HIGH (RED LED):** to start on high mode press button once after it turns on, the light will go solid red
- MEDIUM (WHITE LED):** press again for medium
- LOW (BLUE LED):** press again for low  
(Each press will take you to the next setting)
- TURN OFF:** to turn off, press and hold at any temperature setting, until led light turns off.

## POWER SOURCE

Grab your Ravean power bank and locate the 2A output USB socket. Make sure the power bank is fully charged by shaking it side to side, the power strip will light up blue.

## CONNECTING BATTERY

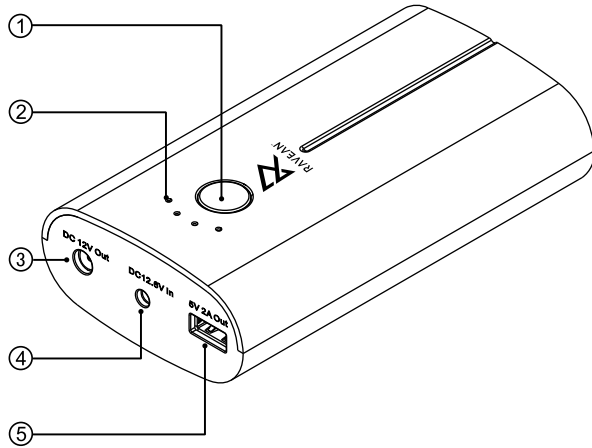
With your fully charged Ravean 5V power bank ready to go, plug in the USB cord into the 2A outlet. Place it into the garment battery pocket. Well done!

## CONTROLLING YOUR JACKET

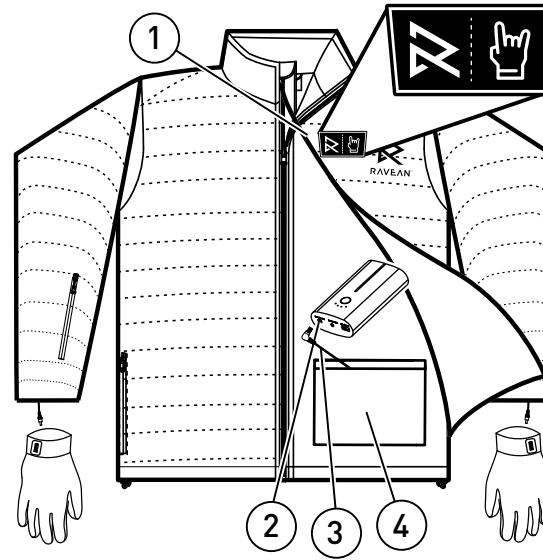
Press and hold the control button until the LED light, located on the button, lights up. Once the LED light is on, your garment will immediately begin warming you.



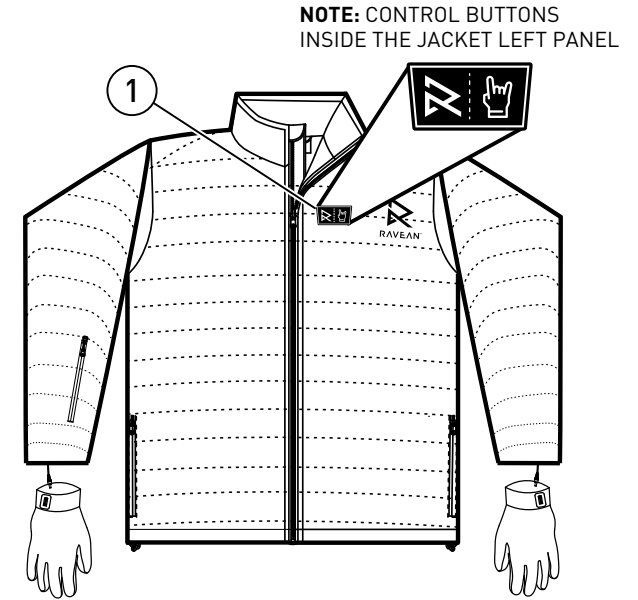
# RAVEANHEAT™ C6 SYSTEM : 12V QUICK SETUP GUIDE



- ① Power indicator button
- ② LED power indicator
- ③ 12V outlet
- ④ 12.6V inlet
- ⑤ USB outlet for charging mobile devices



- 1. CONTROL BUTTONS
- 2. 12V OUTPUT POWER PORT
- 3. 12V POWER CORD
- 4. BATTERY POCKET



## 1. CONTROL BUTTONS (JACKET AND GLOVES)

- TURN ON:** press and hold for 1-2 seconds to turn on. The button will light up and pulse red as it preheats (about 5 minutes), and then automatically adjust to medium heat (white led light)
- HIGH (RED LED):** to start on high mode press button once after it turns on, the light will go solid red
- MEDIUM (WHITE LED):** press again for medium
- LOW (BLUE LED):** press again for low  
(Each press will take you to the next setting)
- TURN OFF:** to turn off, press and hold at any temperature setting, until led light turns off.

## POWER SOURCE

Grab your Ravean power bank and locate the 12V Outlet. Make sure the power bank is fully charged by the power indicator button. Our 12v battery works with both 5v and 12v systems.

## CONNECTING BATTERY

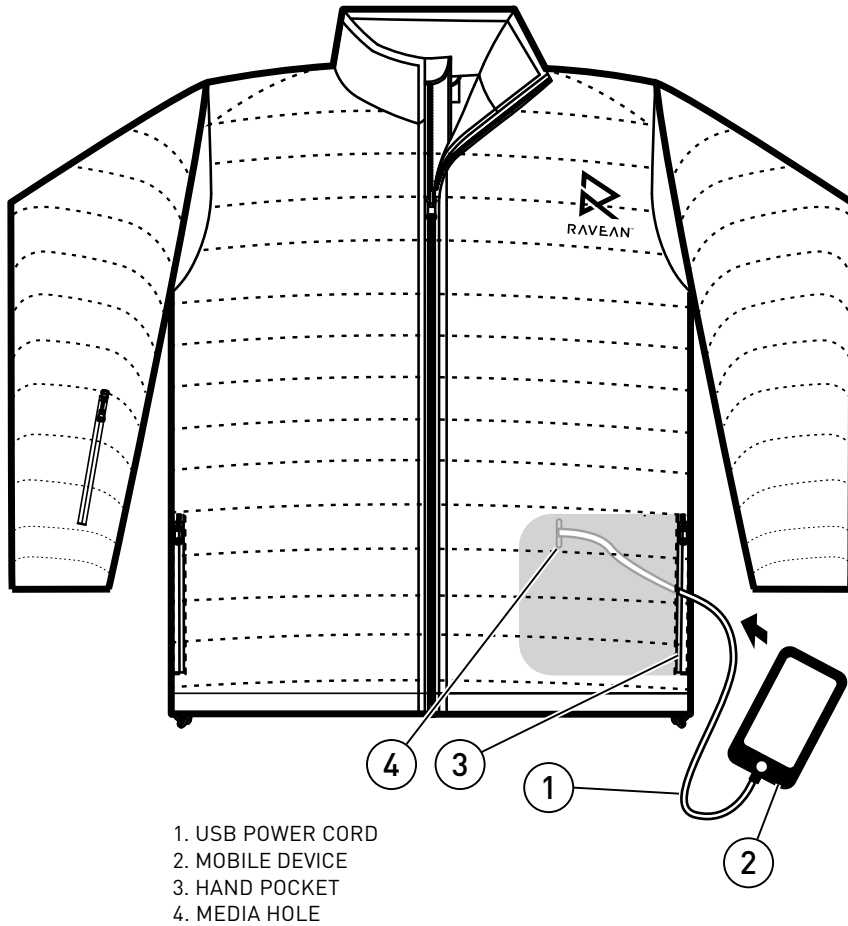
With your fully charged Ravean 12V power bank ready to go, plug in the 12V power cord. Place it into the battery pocket. Well done!

## CONTROLLING YOUR JACKET

Press and hold the control buttons until the LED light, located on the button, lights up. Once the LED light is on, your garment will immediately begin warming you. Repeat for the glove control button.



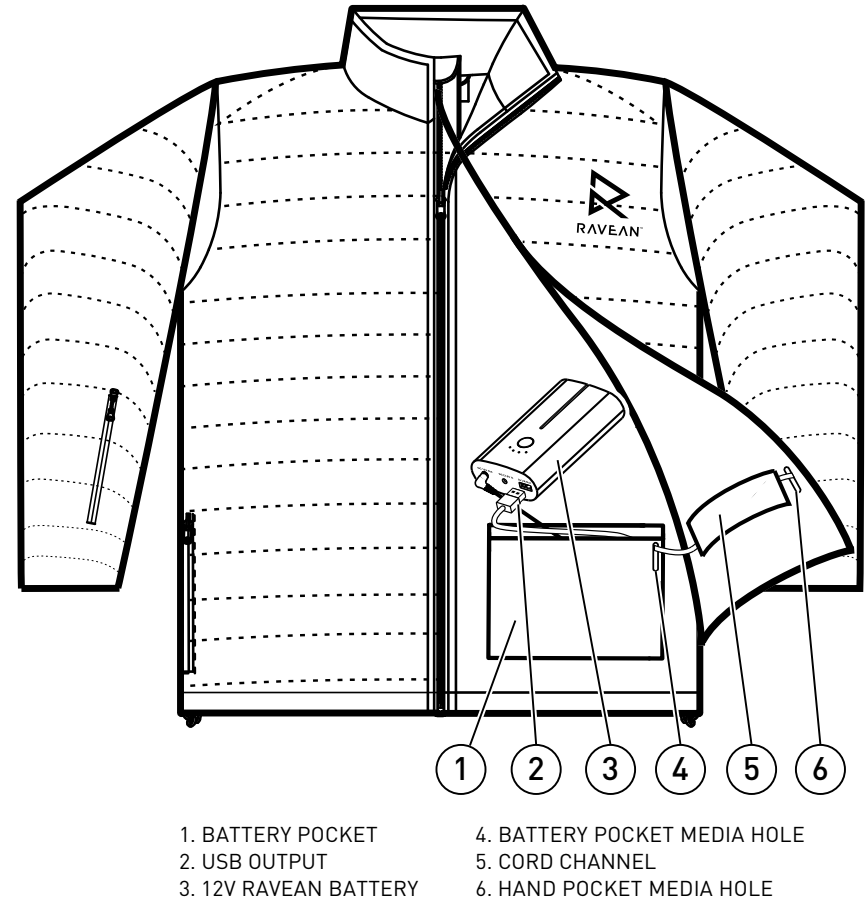
# RAVEAN 12V MOBILE CHARGING



1

## STEP 1

Plug in your mobile devices USB power cord (1) into your mobile device (2). Take the full size USB and thread it through the media hole inside the pocket.



2

## STEP 2

From the inside of the jacket feed the USB cable through the channel (5), then into the media hole (4) on the battery pocket. Plug in the USB to the USB output on the battery (3). Place the battery in the battery pocket and zip up. You're good to go!

## GENERAL SAFETY WARNINGS

### WARNING READ ALL SAFETY WARNINGS AND INSTRUCTIONS.

Failure to follow the warnings and instructions may result in electric shock, fire and/or serious injury. Save all warnings and instructions for future reference

### ELECTRICAL SAFETY

- Do not expose heated jacket to rain or wet conditions. Water will increase the risk of electric shock.
- Do not abuse the power cable. Never use the cord for carrying, pulling or unplugging the heated jacket. Keep cord away from heat, oil, sharp edges or moving parts.

### HEATED JACKET USE AND CARE

- Do not use the heated jacket if the power button does not turn it on and off. Any heated jacket that cannot be controlled with the power button is dangerous and must be repaired.
- Disconnect the battery pack from the heated jacket before storing. Such preventive safety measures reduce the risk of starting the heated jacket accidentally.
- Maintain heated jacket. Check for breakage of parts and any other condition that may affect the heated jacket's operation. If damaged, have the heated jacket repaired before use.
- Use the heated jacket in accordance with these instructions, taking into account the working conditions and the work to be performed. Use of the heated jacket for operations different from those intended could result in a hazardous situation.
- Recharge only with the charger specified by the manufacturer. A charger that is suitable for one type of battery pack may create a risk of fire when used with another battery pack.
- Use heated jacket only with specifically designated battery packs. Use of any other battery packs may create a risk of injury and fire.
- When battery pack is not in use, keep it away from other metal objects like paper clips, coins, keys, nails, screws, or other small metal objects that can make a connection from one terminal to another. Shorting the battery terminals together may cause burns or a fire.
- Under abusive conditions, liquid may be ejected from the battery; avoid contact. If contact accidentally occurs, flush with water. If liquid contacts eyes, additionally seek medical help. Liquid ejected from the battery may cause irritation or burns.

### SPECIFIC SAFETY RULES

#### READ INSTRUCTIONS CAREFULLY.

##### USE:

- Do not use this heated jacket with an infant, child, a helpless person, or anyone insensitive to heat, such as a person with poor blood circulation.
- If you have a medical condition making you sensitive to overheating, or you use any personal medical devices, consult the device manufacturer and/or your physician to determine if use of this product is appropriate.
- Never use if inner liner is wet.
- Heating elements are not recommended to touch bare skin.
- Shut off power immediately if discomfort occurs.
- Do not allow the cords to be pinched.
- If improper operation of this heated jacket is observed,

discontinue its use immediately and contact a Ravean service facility for repair.

- Do not use pins. They may damage the electric wiring.

### CARE:

- Before washing, disconnect and remove battery pack and battery holder from battery holder pocket. Push the power cord completely into the battery holder pocket and fasten closed.
- Follow care instructions on tags. Machine wash, gentle cycle in cold water. Tumble dry low heat.
- Do not bleach.**
- Do not iron.**
- Do not wring or twist.**
- Do not dry clean. Do not use dry-cleaning fluid** on this heated jacket. Do not bleach. Cleaning solvents may have a deteriorating effect on the insulation of the heating element.
- Maintain labels and nameplates. These carry important information. If unreadable or missing, contact Ravean for a free replacement.

### OPERATION

The power buttons are located on the upper left inside of the jackets.

To turn on, press and hold the heated jacket power button (1 to 2 seconds). The jacket will be turned to High and the red LED will light, then automatically cycle to medium heat after it has warmed up. Temperature setting can be adjusted at any time by pressing the heated jacket power button. Each press will cycle through the heated jacket's temperature settings.

To turn off the heated jacket, press and hold the heated jacket power button until the LED turns off (1 to 2 seconds).

If the heated jacket turns off unexpectedly, check connections and charge the battery pack.

DO NOT leave the battery in the jacket overnight. It may cause the battery to slowly discharge.

### WARNING TO REDUCE THE RISK OF INJURY

Always unplug the charger and remove the battery pack and battery holder from the heated jacket before performing any maintenance. Never disassemble the heated jacket, battery pack or charger. Contact Ravean for ALL repairs.

If the heated jacket does not start or operate properly with a fully charged battery pack, clean the contacts on the battery pack. If the heated jacket still does not work properly, return the heated jacket, charger and battery pack, to Ravean for repairs.

### WARNING TO REDUCE THE RISK OF PERSONAL INJURY AND DAMAGE, disconnect and remove battery pack and battery holder from battery holder pocket before washing. Never immerse your battery holder, battery pack, or charger in liquid or allow a liquid to flow inside them.

Always unplug the charger and remove the battery pack and battery holder from the heated jacket before performing any maintenance. Never disassemble the heated jacket, battery pack or charger. Contact Ravean for ALL repairs.

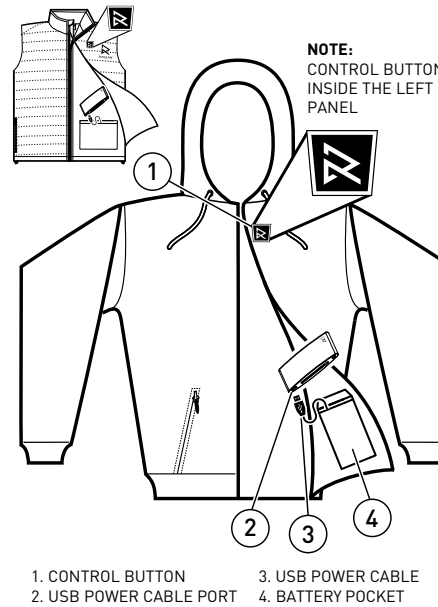
### ACCESSORIES WARNING

#### ALWAYS REMOVE BATTERY PACK

before changing or removing accessories. Only use accessories specifically recommended for this jacket. Others may be hazardous.

For a complete listing of accessories for your Ravean jacket go online to [www.ravean.com](http://www.ravean.com).

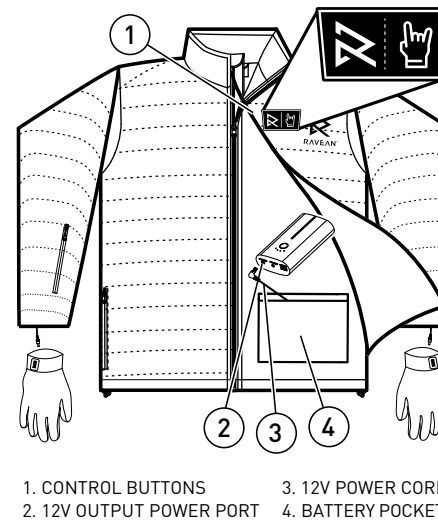
## FUNCTIONAL DESCRIPTION - 5V SYSTEM



## SYMBOLOLOGY



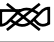



|  |  |
|--|--|
|  | Volts                                    |
|  | Direct Current                           |
|  | Machine wash, Gentle Cycle in warm water |
|  | Do not bleach                            |
|  | Do not wring or twist                    |
|  | Tumble dry, low heat                     |
|  | Do not iron                              |
|  | Do not dry-clean                         |

## FUNCTIONAL DESCRIPTION - 12V SYSTEM



## HOW TO TAKE CARE OF YOUR DOWN GARMENT.

Hand wash or machine wash with cold water.

|  |  |
|--|--|
|  | MACHINE WASH, GENTLE CYCLE IN COLD WATER |
|  | DO NOT BLEACH                            |
|  | DO NOT WRING OUT OR TWIST                |
|  | TUMBLE DRY, LOW HEAT                     |
|  | DO NOT IRON                              |
|  | DO NOT DRY-CLEAN                         |

## SPOT CLEANING

If your down jacket gets a few areas of light dirt or other substance, you don't need to wash the whole thing.

Use a small drop of liquid detergent and with wet towel, lightly scrub at the affected area until clean.

## HAND WASH INSTRUCTIONS

- 1.Prepare cold water.
- 2.Keep down jacket inside the water for 10 mins and brush dirty part with soft brush. Don't rub the garment.
- 3.Squeeze the water out of garment. Do not twist. Then use clean water to wash away remaining detergent.
- 4.Mix 1 tsp [5ml] vinegar into water then place garment in water for 5 to 10 mins. Squeeze garment out excess water. **Do not twist or ring out.**
- 5.Using a dry clean towel wrap around the garment and squeeze out any remaining moisture. Air dry on a flat and clean surface, or hang dry using a plastic hanger. Avoid exposure to sun, DO NOT IRON. Once the garment is dry flap it a few times to fluff up the down.
- 6.Always store your down jackets uncompressed in a clean and dry spot.

## MACHINE WASH INSTRUCTIONS

- Use only front loading washer
- A dryer with low heat
- Three clean tennis balls (optional)
- Detergent for down products

## RECOMMENDED DETERGENTS:

Granger Down Wash, Gear Aid ReviveX Down Wash, or Nikwax Down Wash. We've used them all and they work very well. You could use a regular detergent, but we wouldn't recommend it. Regular detergents can leave fragrances and residues that are hard to wash out and they might even strip some of the natural oils from the down.

**NOTE:** Use a front-loading washer because it will be more gentle on your garment. Top-loading washers can sometimes snag and rip gear.

## WASHING YOUR DOWN JACKET

1. To get started, use a small amount of stain remover or down wash to treat any really dirty spots.
2. Place your jacket in the washing machine on delicate cycle, set to cold (not hot or warm) and put in the down wash as directed.
3. Dry with lowest heat setting on your dryer. You could throw in three clean tennis balls to help break up wet clumps of down, but its not mandatory. If you don't have any tennis balls, you can put shoes inside clean socks or make sock balls as a substitute.

The drying process will be slow, but it's the most important part, so be patient. It usually takes around 2-3 hours to dry.

Make sure your coat is completely dry before packing or compressing it. Compressing wet down can hurt the insulation properties of your garments and can cause mold to form.

Always store your down jackets uncompressed in a clean and dry spot.

## RAVEAN PRIDES ITSELF IN PRODUCING A PREMIUM QUALITY PRODUCT.

Your satisfaction with our products is very important to us! If you encounter any problems with the operation of our jackets, or you would like to give us feedback on our jackets, please contact us through our website at Ravean.com

### For service information

- Technical Questions
- Service/Repair Questions
- Warranty

**email:** support@ravean.com

**Register your jacket online at ravean.com**

- Receive important notifications regarding your purchase
- Ensure that your jacket is protected under the warranty

## RAVEAN LIMITED WARRANTY POLICY AND GUIDELINES

Ravean stands behind the quality of everything we sell and hope you're happy with your gear.

Ravean branded products purchased are warranted to the original owner against manufacturing defects in materials and workmanship for 90 days.

If a Ravean branded product covered by this warranty fails due to a manufacturing defect we will repair the product, without charge, or replace it, at our discretion. Only original, unaltered and unmodified materials and workmanship are covered by this policy. This warranty does not cover damage caused by accident, improper care, negligence, normal wear and tear, or the natural breakdown of colors and materials over extended time and use.

To return a Ravean item for Warranty Evaluation, you will need a Return Authorization Number (RA number), which can only be obtained directly from Ravean. Upon receipt of the online Warranty or Request Form, we will

- Initiate the return process
- Send you a confirmation email that your return request is initiated
- Send you a confirmation email within approximately 72 hours with an;

-RA Number

- A return address

- All other information needed to complete the request

### Once you receive the RA email with Return instructions:

-Ship the item back to us and include a copy of the RA form

-Email to us at warranty@ravean.com, the tracking number

All shipping to Warranty must be pre-paid and insured. COD will be refused and fees incurred by the customer. Return shipping labels are not provided. Ravean cannot be liable for lost in-bound packages. Utah State law requires that products accepted for repair must be clean. Charges will be assessed if cleaning is necessary or product may be returned to you if it cannot be adequately cleaned.

**IMPORTANT!** Please do not send your item back to Ravean without the proper RA number and form.

This warranty is available world-wide.

This warranty gives you specific legal rights; you may have other rights, which vary from state to state.

The products eligible for warranty are covered under warranty, to the original owner only.

The Ravean warranty covers manufacturing defects in materials and workmanship, for 90 days. It does not cover normal wear and tear. Wear and tear is damage that naturally and inevitably occurs as a result of normal use. Regardless of how carefully you use, or how well you care for your Ravean product, it will eventually begin to show age and wear. Common examples of wear and tear that would not be covered under the warranty include colors fading, abrasions on the bottom of battery packs or at the cuffs/pockets from rubbing when you walk and general breakdown of the materials over the years.

